



RAINBOW ARTISTS

WWW.RAINBOWARTISTS.COM

WOMEN MAKING ART SINCE 1990

October 2021 Newsletter

Rainbow Artists Monthly Meeting
Sunday, October 17, 5-7 pm
Program: Oil Pastel Scratch Painting
Albuquerque Press Club
201 Highland Park Circle

Rainbow's bank balance is \$3,211.50.

You may bring food to the Press Club but not drinks, not even water. Beverages can be purchased at the bar at very reasonable prices. In August we met outside on the porch and it was quite comfortable.

Janine Wilson will guide an interactive painting event using oil pastels and crayons and then scratching a design. Bring scratching tools such as bamboo skewers, popsicle sticks, nail files and oil pastels if you have them.

Please continue to send us what you are creating so Janine can post it on our Facebook site and it makes it into the newsletter (emails below). You can also text photos to Janine at 505-200-1638.



ARTportunities

New Mexico Arts, Culture, & Creativity Network
<https://www.facebook.com/nmcreativenetwork/>

Peace and Justice Center:

Eliza has reserved mid-October through mid-January for Rainbow Artists. Usually they don't do receptions. The Center is open daily except weekends. If you are interested in a solo show there now or participating in the Rainbow show, contact Eliza Schmid, the Art Coordinator, at elizaschmid440@gmail.com.

The Gallery ABQ

Rainbow Artists Celebrate 30 years, April 2022.
 Details and Call for Entry to Follow.

The Matrix Gallery

November 2022
 Theme to be decided

New Mexico Art League: Small works

December 7—January 15
 Entry deadline October 30

A fun show to celebrate the season! This Small Works Show is open to all artists working in the media of painting, drawing, printmaking, photography or mixed media.





ARTspiration

Now that we are meeting in person again, the newsletter deadline for inclusion in ARTspiration is the first of each month (with or without a reminder).

The New Mexico Committee of the National Museum of Women in the Arts has launched a blog to which you can subscribe [here](#). Each month they spotlight women artists you either know or may want to know.

Janine Wilson's Bandelier images was selected for the 2021 Celebrate Route 66 West Central Street Light Banner project. The banners will be hung west of Coors in November. Image on page 4.

Eliza Schmid: has a show at the Center for Peace and Justice (Harvard & Silver) until mid October. She also a small show at the Fergusson Library until the end of October. Image at right.

Leslie Kryder has a show at the Albuquerque Peace & Justice Center, 142 Harvard Dr SE, 87106, which will be up from October 15 through November 17. It's titled *Forms and Figures* and includes both portraits and abstract works. Call for hours at 505-268-9557. She also has an upcoming show at the Edna Ferguson library - *Heading to Abstraction*, which will be up during the month of November. Please drop by during library hours. Image on page 3. abqlibrary.org/ernafergusson

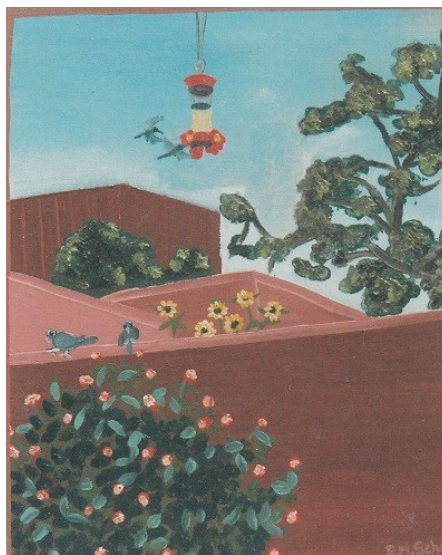
Sue Pine has two pieces in the Rancho Cordova City Hall Exhibition. Image at right

Barbara Endicott has been drawing the musicians at the Downtown Growers Market most Saturdays. Hearing live music while drawing is so wonderful and inspirational. She says "The larger the band the greater is the challenge. I am often using a Sailors fountain pen which gives a calligraphic line. I use a 30% gray marker for the initial gesture so that I can establish the composition first before going with ink. The lightness of the marker also allows for changes I inevitably make. I also use the marker to make gestures of the people listening to the music and they become the suggested background."

Sue Pine, *The Conversation*



Eliza Schmid, *Albuquerque Neighborhood with Hummingbirds*





ARTspiration continued



Leslie Kryder

Sondra Diepen and Carol Adamac continue work on their book about Route 66, and Sondra has shared some new images with us with this comment: "First one is in Shiprock. One of several murals on old remains of a laundromat I believe. Second: Navajo high school in Aneth, Utah. These are made with colored plastic squares that clip into the fencing. It was so cool."



Negative Painting

From an article by Linda Kemp

It's about simplifying the complicated and taking an alternative negative (subtractive) approach. Simply put, working in the negative means to establish the subject by painting around it rather than by painting the object or subject itself..

Artists working "in the negative" rely on informative shapes, spaces and descriptive edges—rather than the details inside—to tell their story and provide information. While gradation of color and shading are typically used to show volume, negative painters generally work with flatter forms and indicate depth by layering shapes and changing their size.

To effectively make better shapes it's essential that we become more observant of forms and silhouettes and avoid getting distracted by inside particulars such as matching colors or texture-making. You can still include these features but don't become preoccupied with them too early in the process.

Here are a few guidelines I follow:

- Take time to decipher, understand, interpret and organize.
- Concentrate on the subject as a collection of basic, flat shapes that lock together.
- Simplify, stylize and arrange the basic shapes for better composition and design.
- Pay attention to the shape, size and placement of forms.
- Cut around the shapes.
- Layer the shapes to build your painting.
- Start with the object that's closest to you and work back to the furthest, underlapping as you build front to back.
- Watercolor works best when building from light to dark or from intense to neutral colors. It's also possible to change hue but layering opposites will neutralize the hues.

Watch a demonstration [here](#).



RAINBOW ARTISTS

WWW.RAINBOWARTISTS.COM

WOMEN MAKING ART SINCE 1990

Contacts

Treasurer, historian, webmaster:

Janine Wilson

(janineabq@gmail.com)

Newsletter editor: **Joan Fenicle**

(joanf41@gmail.com)

Members voted to make **2021 dues \$12** though people are welcome to give more. Pay yours now. Make check to Rainbow Artists, and mail to Janine Wilson, 12812 Bryce Court NE, Albuquerque, NM 87112

Mission Statement

Rainbow Artists, an award winning women's collective established in Albuquerque in 1990, supports, promotes, and encourages women artists.

- * We embrace ethnic and artistic diversity.
- * We strive to grow in our art and our association with each other.
- * We share our talents and enrich our creativity and our community through collaborative exhibits and projects.

Rainbow Artists
12812 Bryce Court NE
Albuquerque, NM 87112
www.rainbowArtists.com

Share our [Facebook](#) page with your friends. The more traffic we get, the more exposure your art has.



Janine Wilson, Bandelier banner