



RAINBOW ARTISTS

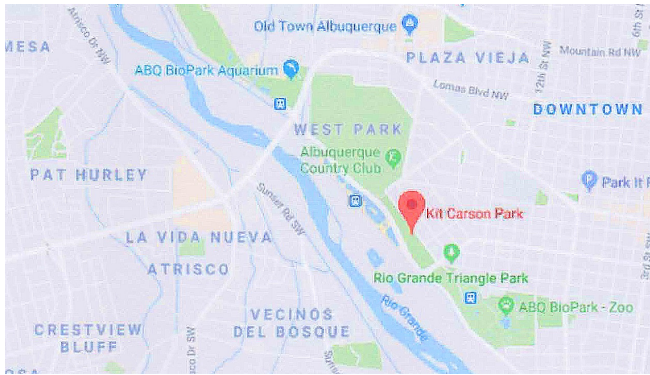
WWW.RAINBOWARTISTS.COM

WOMEN MAKING ART SINCE 1990

May 2019 Newsletter

Rainbow's May Picnic
Sunday, May 19, noon-2 pm
Kit Carson Park
1744 Kit Carson Avenue SW

Bring a dish to share and enjoy the companionship of our creative Rainbows.



A view of Kit Carson Park ... looks like a lovely spot for a summer picnic.

Contacts

Treasurer: Sue Pine
(slpine@gmail.com)
Newsletter editor: Joan Fenicle
(joanf41@gmail.com)
Historian and webmaster: Janine Wilson
(janineabq@gmail.com)
Publicity: Leslie Kryder
(leslieunm@gmail.com)

Please mail your \$25 for 2018 dues to:
Susan Pine
2200 Lester Dr NE, #378
Albuquerque, NM 87112

Send Healing Energy to Martha

We hear that Rainbow's most energetic member, Martha Heard, has broken her wrist. No doubt she was cross-country skiing or rock climbing! Slow down Martha and heal up soon.

Web Thinking

Using large sheets of paper and starting in the middle, jot down some random ideas and potential projects. Start with your current interests and add fantasies, secret passions and ambitions. Let one idea lead to another and connect them with lines like a spider's web so they begin to "breed." Let your thoughts range from simple exploratory sets of works to complex mind-bending installations. You need clear time to take this task seriously so that the process becomes natural to you. Evolved artists habitually and actively bounce ideas between hemispheres. Natural to some, the art of yin-yang can also be learned. Don't share with anyone. Live for a while in the embrace of your imagination, no matter how outrageous. Mind-test and envision but don't give in to early rejection. Associate freely.



April Meeting Notes

(not available)

ARTportunities

New Mexico Arts Large Scale Purchase Initiative

The objective of the Large Scale Purchase Initiative is to diversify the state's public art collection by purchasing artwork from artists in all stages of their career. All media in all genres, suitable for both interior and exterior display, will be considered. Artwork must be durable, permanent, low-maintenance, and in compliance with ADA guidelines.

Deadline May 31, 2019

View prospectus [here](#)

New Mexico Art League Call for Art

Sky's the Limit—New Mexico

September 3-October 12, 2019

an exhibition focusing on New Mexico artists' unique interpretations of the beauty of the New Mexico skies.

Entry begins June 1, 2019

Deadline July 27, 2019

Through the Flower Art Space and Belen Arts District Launch

Pop-Up Exhibition July 20-21, 2019

The Through the Flower Art space is celebrating its grand opening with a weekend of events along Becker Avenue. They are currently accepting submissions for a pop-up show in Belen's Old City Hall. Three selected artists will each be given a room to install their exhibition. Work may include 2D work, video, sculpture and performance.

Information: Amanda@throughtheflower.org

Deadline June 1, 11:59 pm

Check out the [RGAA newsletter](#) attached for lots of workshops. It is posted on the Rainbow website.

Read about art opportunities in New Mexico, including job listings, [here](#).



Carol Adamec's Mt Fuji: Pink Mists, MM on rice paper



Agave, Janine Wilson



ARTvictories

Eliza Schmid has several shows in May:

- Solo show at the Fergusson Library, Palo Verde & San Mateo, until the end of May.
- Solo show at the Daily Grind, 4360 A Cutler Ave. NE, May 18 - June 22.
- Soloshow at the Sierra Club office, Lead & Harvard, until the end of May
- Two person show at the Matrix Gallery, 3812 Central SE, until the end of May
- Groupshow at the Episcopal Church, Richmond NE, until the end of May
- Two Person show at the Alb. Little Theater, San Pasquale Rd, SW, until June 20
- Groupshow with the Artists 'Round Town at Millie's Restaurant, Jefferson Blvd. NE until the end of June.

Deborah Welch is exhibiting paintings in the group show *Abstract & Surreal Work* at St. Mark's Episcopal Church through May 31.

Marian Berg will show her paintings in a solo show, *Enchanted Places and People*, at O'Niells, 3301 Juan Tabo NE. Exhibit runs from May 26 to June 29. She co-taught a plein air workshop with Michelle Chrisman at Ghost Ranch in late April and they will be teaching another one at Ghost Ranch from October 6 to October 19, 2019.

Janine Wilson has three encaustic miniatures in The Gallery ABQ Small Works show through May 24. She also has five paintings at St. Mark's Episcopal Church in the Pen Women show which runs from June 1 - August 30. Image on Page 2.

Leslie Kryder opens her first solo show at Napoli Coffee—*Rocks, Stones, Standing Stones*. Continues through June 15. This series is inspired by the beauty and color of rocks.

Angela Storch sold the painting *Beautiful Day* from the current show at Keshet. Image on page 4.

Carol Adamec's exhibit of flowers and kimonos, *In a Japanese Garden, Revisited*, continues through May 31 at Weyrich Gallery, located at Candelaria and Louisiana in the NE Heights. Carol will be giving a short Artist's talk at the Gallery on Saturday May 18 at 1:30 during the afternoon "Meet & Greet" from 1-3pm. The exhibit can be viewed during regular gallery hours: Tue-Fri 10:30am - 5:30pm, and Sat 11am - 5:30pm. Image on Page 2.

Nkazi Sinandile, founder of New Mexico Women's Global Pathways and long time friend of Rainbow Artists, is presently in her native South Africa visiting her sick son after 38 years in New Mexico. She has started a GoFundMe in celebration of her 70th birthday to help move two HIV/aids orphaned young adults from vulnerability to self help. Check it out [here](#).

Gloria Hajduk attended the reception for Women's Building groups that have donated archives to the Getty Research Institute. Gloria was part of Mother Art, one of many feminist art collectives operating in downtown Los Angeles in the 1970s, reflecting the sociopolitical and feminist art practices of the group. She says it feels good to be a part of feminist history in LA.

Sue Pine participated in Art Along the Rio Grande at the Gutierrez-Hubbell House in late April.

Share

Share our [Facebook](#) page with your friends. The more traffic we get, the more exposure your art has.



RAINBOW ARTISTS

WWW.RAINBOWARTISTS.COM

WOMEN MAKING ART SINCE 1990

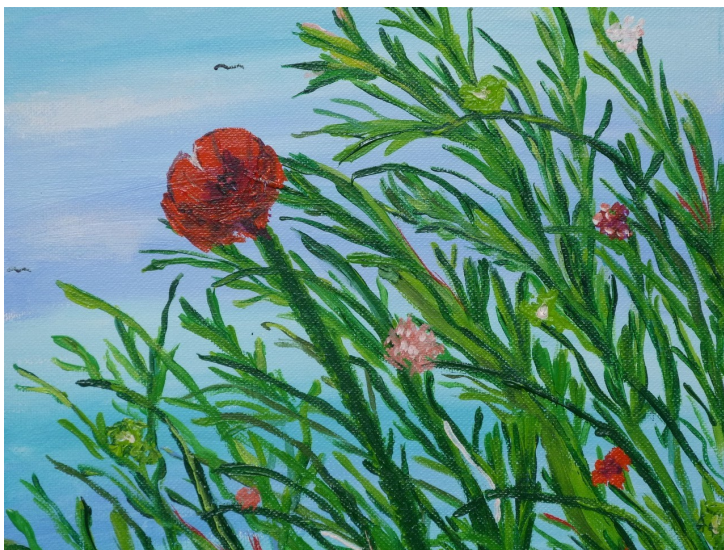


Mission Statement

Rainbow Artists, an award winning women’s collective established in Albuquerque in 1990, supports, promotes, and encourages women artists.

- * We embrace ethnic and artistic diversity.
- * We strive to grow in our art and our association with each other.
- * We share our talents and enrich our creativity and our community through collaborative exhibits and projects.

Rainbow Artists
 13500 Skyline Road NE, Apt G3
 Albuquerque, NM 87123
www.rainbowArtists.com
 Newsletter deadline is the 1st of each month.



Beautiful Day, Angela Storch