



RAINBOW ARTISTS

WWW.RAINBOWARTISTS.COM

WOMEN MAKING ART SINCE 1990

June 2021 Newsletter

Rainbow Artists

No June meeting, Zoom or in person

We should be able to meet in person again soon. It's been way too long!.

Let's keep in touch and let's keep making art. Please send us what you are creating so Janine can post it on our Facebook site and it makes it into the newsletter (emails below).

You can also text a photo to Janine at 505-200-1638.

Sharing Your Work

Sharing some thoughts from the twice-weekly newsletter *The Painter's Keys*.

“Just like aging wine, a product of creative work acquires quality over time,” suggests theoretical physicist Avi Loeb recently in *Scientific American*. “It is colored by the response of the audience as well as by imitations.” What Loeb proposes is that truly innovative ideas, both scientific and artistic, gain strength when shared. By being sent out into the world, they have a chance to be scrutinized, absorbed into the culture and even copied. The world can then measure and contextualize them in the era, giving them the chance to become cultural assets. Perhaps ideas are meant to ripen — or the world is — allowing new thoughts to emerge as new truth, over time. The rub, of course, is that sharing creative work can be terrifying for the sharer, especially when the work is untested or high-risk.

Rainbow Artists came into existence and continues to be relevant because we believe in producing nonjuried exhibitions what give every member, regardless of where she is in her artistic journey, the opportunity to exhibit, mentor and grow. One cannot thrive as an artist (visual, music or spoken word) in a vacuum. Long live Rainbow Artists.

ARTportunities

New Mexico Arts, Culture, & Creativity Network

<https://www.facebook.com/nmcreativenetwork/>

THE magazine: Classifieds

THE magazine has launched an online classifieds listings page for artists. See the opportunities for artists [here](#).

Peace and Justice Center:

Eliza has reserved October, November and December 2021 for Rainbow Artists at no cost. The space there is not large, ideal for rotating one or two person shows each month. It will accommodate 9-10 medium sized paintings and 5-6 small ones. The place is secure, nothing has been stolen so far, but not much has been sold either. Usually we don't do receptions because there is so much going on the first Friday of each month, but the Center is open each day except for weekends. At the moment the Peace Hall has no paintings because of an artist cancellation, so if you are interested in a solo show there now or participating in the Rainbow show, contact Eliza Schmid, the Art Coordinator, at elizaschmid440@gmail.com.

New Mexico Art League: High Desert

September 7—October 15, 2021

An exhibition of a wide array of works depicting many views of our New Mexico desert and mountains. Prospectus [on line](#).

Entry deadline July 31, 2021

New Mexico Only Purchase Initiative:

Open to artists who reside in and galleries that are located in New Mexico (galleries may submit on behalf of artists represented by the gallery). Artwork is purchased for publically accessible buildings throughout the state including amphitheaters, animal shelters, community centers, courthouses, fire stations and more. Projects amounts are \$1,000-\$20,000 including materials, labor, insurance, taxes, commissions, fees, delivery, installation, travel, museum quality framing under Plexiglas, security hangers, pedestal for small and large three-dimensional works. Read the [Prospective](#) here.

Submission deadline August 13, 2021



ARTspiration

The New Mexico Committee of the National Museum of Women in the Arts has launched a blog to which you can subscribe [here](#). Each month they spotlight women artists you either know or may want to know.

Carol Adamec and **Sondra Diepen** have been working on a book about Route 66 here in New Mexico. It will be a Visual Tour starting at the Texas border, Glenrio, and ending at the Arizona border, Lupton. A historical narrative will be included for most of the sites. See the cover image at right.

Marian Berg keeps busy, as always, planning a mural at the UNM Children's Hospital and teaching a mural workshop at Ghost Ranch from June 27 to July 2. She has a couple paintings in the RGAA juried show at Casa Vieja (4541 Corrales Rd) from July 2-25 with an opening July 2 from 5 to 8 pm.

Eliza Schmid is taking advantage of the new normal:

- Solo show at the Albuquerque Press Club, 201 Highland Park Circle, SE. Open 5pm to midnight, except Sundays.
- Accepted into the new Ricochet Gallery, 1102 Mountain Rd. NW, for a group show.
- Has several paintings at the Matrix Gallery, 3812 Central SE and the Peace and Justice Center, Harvard & Silver.
- Has a painting in the group show at South Broadway Cultural Center.

Rainbow Artists currently has a Peace exhibition including some of the Nobel Peace Prize winner paintings at the Peace and Justice Center, 202 Harvard from June 17-July 22. 505-268-9557 Hours: 9-5, Monday - Friday. See Mellie Myer's *Albuquerque Nights* at right.

Leslie Kryder, **Paula Stern** and **Janine Wilson** have paintings in the *In Bloom* show at the Art League from June 8-July 17. Paula's painting *Serenity of Trees* is on the next page.

Janine Wilson has two paintings in the Rio Grande Art Association's Summer Sale at the Casa Vieja Brewery, 4541 Corrales Road from July 2-25. The opening reception is Friday, July 2 from 5-8 pm. Hours are Thursday-Sunday, 3-8pm. *Inferno* is at right.



Albuquerque Nights, No Justice, No Peace
Mellie Myer



Inferno, Janine Wilson



Contacts

Treasurer, historian, webmaster:

Janine Wilson

(janineabq@gmail.com)

Newsletter editor: **Joan Fenicle**

(joanf41@gmail.com)

2021 Dues are due NOW:

Members voted to make **2021 dues \$12** though people are welcome to give more. Make check to Rainbow Artists, and mail to Janine Wilson, 12812 Bryce Court NE, Albuquerque, NM 87112

Getting in the Groove

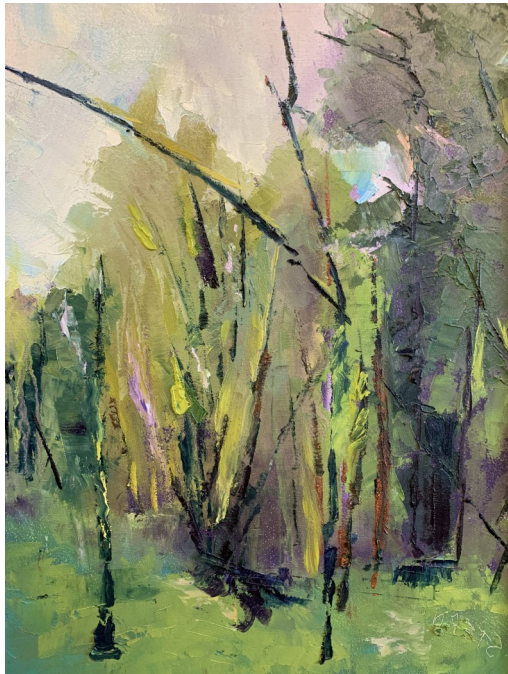
Mission Statement

Rainbow Artists, an award winning women's collective established in Albuquerque in 1990, supports, promotes, and encourages women artists.

- * We embrace ethnic and artistic diversity.
- * We strive to grow in our art and our association with each other.
- * We share our talents and enrich our creativity and our community through

Rainbow Artists
12812 Bryce Court NE
Albuquerque, NM 87112

Share our [Facebook](#) page with your friends. The more traffic we get, the more exposure your art has.



Serenity of Trees, Paula Stern