



RAINBOW ARTISTS

WWW.RAINBOWARTISTS.COM

WOMEN MAKING ART SINCE 1990

July 2019 Newsletter

**Fabric Collage: presented by
Janine Wilson and Carol Sullivan
Sunday, July 21, 2-4 pm
OFFCenter Community Arts
808 Park Ave SE**

Janine and Carol will give demos about different methods of doing fabric collage. It will be a hands-on workshop so bring any scraps you like and good scissors for material. We will be sewing, pasting or ironing our collages.



Contacts

Treasurer: Sue Pine
(slpine@gmail.com)

Newsletter editor: Joan Fenicle
(joanf41@gmail.com)

Historian and webmaster: Janine Wilson
(janineabq@gmail.com)

Publicity: Leslie Kryder
(leslieunm@gmail.com)

Please mail your \$25 for 2019 dues to:

Susan Pine
2200 Lester Dr NE, #378
Albuquerque, NM 87112

ARTportunities

**New Mexico Art League Call for Art
Sky's the Limit—New Mexico**

September 3-October 12, 2019

An exhibition focusing on New Mexico artists' unique interpretations of the beauty of the New Mexico skies.

Entry begins June 1, 2019

Deadline July 27, 2019

**The Open Space Visitor Center Gallery
currently has openings for the 2020 visual
arts calendar year.**

Deadline: August 2, 2019

Keshet Workshops

Remember, KIIC workshops are free to Rainbows. Check this one out. Tell them you are a Rainbow member when you register.

<http://keshetarts.org/ideas-and-innovation>

NM Only Purchase Initiative

NM Arts' Art in Public Places Program announces the 2019 New Mexico Only Purchase Initiative. The project is open to artists who reside in and galleries that are located in New Mexico. Galleries must submit qualifications on behalf of any artist represented by the gallery, regardless of the artist's residency. Project amounts are \$1,000-\$20,000 all inclusive. https://artist.callforentry.org/festivals_unique_info.php?ID=6550

Deadline August 2, 2019

Check out the **RGAA** newsletter for lots of workshops. It is posted on our website.

Read about art opportunities in New Mexico, including job listings, [here](#).

Fractured Atlas Blog

News and musings on art, culture, technology, and all things Fractured Atlas at

<https://blog.fracturedatlas.org/>



June 16 Meeting Notes

Treasurer's Report: Bank balance \$3,123.88

Rainbow depends on YOU! Don't be a member who sits back and lets everyone else do the work. Sign up to help make this organization successful. We need facilitators and an exhibition committee that is active. Facilitating a meeting just means asking people if they need to be on the agenda, taking notes and sending them to Joan Fenicle for the newsletter.

The following positions are needed for most exhibitions:

- **Coordinator:** Puts out the call for entry, coordinates submissions, collects money. More detailed description is on the website under member resources.
- **Hanging:** Hanging the show so it flows and looks good is very important. We need at least two hangers per show; people who can climb ladders as well as others.
- **Publicity:** Leslie Kryder is willing to do publicity but we could use someone with layout experience to design postcards and order them from Vistaprint.
- **Seekers:** We are all in a position to seek venues to show if we keep our eyes open to possibilities. Carol Sullivan is doing a great job of seeking restaurant venues in the Nob Hill area.

If we form a real exhibition committee, these responsibilities can be rotated across members. Janine Wilson has been doing the lion's share of this and it is unfair to ask her to do it all the time.

Possible exhibitions:

- Sue Pine is in contact with the Pizza place next to OFFCenter about showing there.
- Sue asked Leslie to ask Napoli if we can get on their schedule for another show.
- Caroline LeBlanc and Janine Wilson will be meeting with Keshet in July to discuss the rest of the year.

- Janine Wilson will follow up again with the Los Lunas Museum of Heritage and Art.
- Some Rainbows met for breakfast at the Daily Grind on Cutler and approached the manager about a possible show by giving him the business card with our website on it. We are waiting to hear his decision.
- Eliza contacted Percy and we are able to have a show at 606 Gallery in September. This will cost us \$400. Email response indicated we should go ahead with the exhibition there.

The Nobel Prize Winner's show is coming up in October at Tortuga. Sue Pine will be purchasing 5x7 frames for a short blurb about each winner to hang next to your artwork. Contact her to get your frame or come to the next meeting to pick it up. Blurb specifications are: Vertical format. Times Roman font. .5" margins, 18pt for name and date of award. 12 pt for the body. Janine will put out the call for entry after she meets with Logan.

We will be discussing how to handle the shows at restaurants at the July meeting. Since everyone won't be able to show at each restaurant, we need a discussion and different coordinators to step forward. This is very important so please be there.

Share

Share our [Facebook](#) page with your friends. The more traffic we get, the more exposure your art has.



ARTvictories

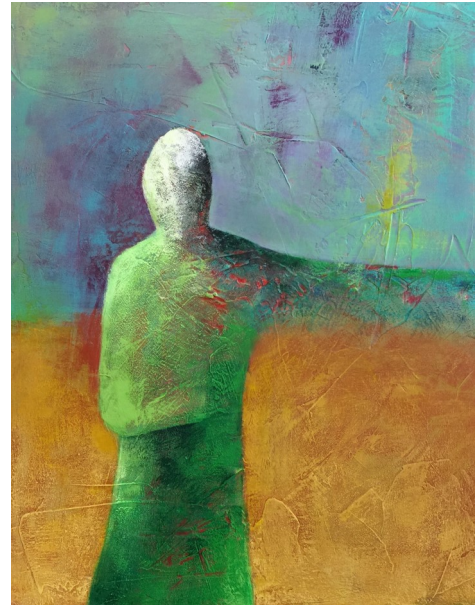
Eliza Schmid can again be found exhibiting around town in July:

- A solo show presently at the South Santa Fe Library off Jaguar Road, until the end of July.
- She became a member of the Matrix Gallery, 3812 Central SE, where she now does some gallery sitting each Friday, 11am-2pm, and can show several of her paintings there all the time. Come and visit this very nice gallery and at the same time visit the excellent print shop next door. The gallery is open from Thursday -Saturday 11am - 5pm

Sue Pine is one of 20 artists in *On the Rise* at the NM Cancer Center., 4901 Lang Ave. NE. Show continues through August 23. She had a very successful opening reception with several paintings sold. There is still an opportunity to see the show at the Walk & Talk, on July 17th, from 6-7:30 pm.

Joan Fenicle has been invited by Travelogues Fine Art Consulting to show eight of her black and white photographs at Art Santa Fe, July 18-21, Santa Fe Convention Center, booth 207. Let her know if you would like a complimentary ticket.

Marian Berg will be co-teaching another plein air workshop with Michelle Chrisman at Ghost Ranch from October 6 to October 19, 2019. She is very grateful to have sold a half dozen paintings, lots of greeting cards and earrings at the O'Niell's show. Also finished a portrait commission and is busy getting ready for the ABQ Showcase!



Boundless, Sue Pine



Bird's Eye View, Joan Fenicle



Pedernal, Early Evening—Marian Berg



Soup is Love Project 2019

Our friend Vicki Bolen has announced her 3rd Annual *Soup is Love Project* benefiting OFFCenter Community Arts. You are invited to make bowls and at the end of the project we celebrate by serving soup and selling the bowls created. Over the last two years, this project has raised over \$9,000 for OFFCenter. (Image below.)

Mark your calendar and make new bowls on the following dates:

Saturday-Sunday, August 24–25, 10–4

Saturday-Sunday, September 14–15, 10–4

Saturday-Sunday, October 19–20, 10–4

Mission Statement

Rainbow Artists, an award winning women’s collective established in Albuquerque in 1990, supports, promotes, and encourages women artists.

- * We embrace ethnic and artistic diversity.
- * We strive to grow in our art and our association with each other.
- * We share our talents and enrich our creativity and our community through collaborative exhibits and projects.

Rainbow Artists

13500 Skyline Road NE, Apt G3

Albuquerque, NM 87123

www.rainbowArtists.com

Newsletter deadline is the 1st of each month.

