



RAINBOW ARTISTS

WWW.RAINBOWARTISTS.COM

WOMEN MAKING ART SINCE 1990

December 2021 Newsletter

Rainbow Artists Monthly Meeting There is no meeting in December January at North Fourth Arts Center 4904 4th Street NW (Just north of Griegos)

Rainbow's bank balance is \$3,181.50.

We were greeted at North Fourth with a wonderful exhibit in the main gallery. We think we have found a welcoming place for our meetings.

You can book space for a class or workshop. North Fourth Art Center has multiple rooms available for a reasonable price. Contact Shannon Flynn at sflynn@northfourthnm.org if interested.

Continue to send us what you are creating so Janine can post it on our Facebook site and it makes it into the newsletter (emails below). You can also text photos to Janine at 505-200-1638.

Piece by Piece in Placitas

A review by Kathleen McNerney

In addition to its spectacular view of the Sandias, and even Cabezón, Placitas has a thriving art community. Their municipal library offered this show of mosaics by local artists, and it was well worth the drive/visit. Among the striking examples are one by Nova Denise called *The Beetle...Joyous Life*, which is a violin encrusted with bits of glass, beads, and representations of dragonflies; a beauty to behold. Lisa Domenici offers *Excess*, which I liked very much, and Erika Harding has two alluring items, *Blue Bee Fountain* and a table named *Poppies*. Terry Storch's *Honesty* is also alluring, along with many other items worthy of admiration.

The turnout for the reception at the library's new gallery was impressive. When I left the show, I stopped by the collective gallery, [Wild Hearts](#), which also deserves a visit. Chapeau to all the artists and organizers of this special part of Placitas.

ARTportunities

Rainbow at The Gallery ABQ

Rainbow Artists Celebrate 32 years, April 2022.
Three piece limit per artist with limited space for 3D work. **Details and Call for Entry to Follow**. Submit image to Janine Wilson by January 15 for publicity.

Rainbow at St. Michael's Episcopal Church

People of the World—April 22 to May 30, 2022
Opening reception April 29th, 6-8 PM
Delivery April 20 from 4-6 PM (NO tooth Hangers)
Pick up images May 30 .
Questions call Grace Collins 504-6726

Rainbow at The Matrix Gallery

November 2022
Theme is *New Reality*
Details and Call for Entry to Follow

New Mexico Art League

Down to Earth—in the gallery and on line
An exhibition of a wide array of works depicting many views of our beloved natural world
January 25—March 5, 2022
[Submit by December 18](#)

Placitas Community Library

Lost & Found
Lost loves, lost opportunities, lost in space! New found knowledge, new found friends or found objects!
[Submit March 5-31, 2022](#)





ARTspiration

Now that we are meeting in person again, the newsletter deadline for inclusion in ARTspiration is the first of each month (with or without a reminder).

Linda Allison has a one-woman show at the Albuquerque Peace and Justice Center. Image at right.

Barbara Endicott is part of a two person show with her husband Laurence Wellborn for the months of December and January. The exhibition is at Castle Coffee located at 727 Tijeras Ave. NW and 8th. There will be an opening January 7, 2022 for Artscrawl 5-8 pm. Image on next page.

Janine Wilson has three paintings at the New Mexico Art League Holiday Small Works show until January 15. (Image on next page) She also has two paintings in the Rio Grande Art Association show at St. Mark's Episcopal Church until March 4.

Nova DeNise was part of the mosaic exhibit at Placitas Community Library. Great show—with a review by New Mexico Women in the Arts. Read it on the front page.

Eliza Schmid is busy, as usual: Solo show at Zendo Cafe (413 2nd St.) through December; Group show with members of Matrix Gallery through December; Group show at House of Recovery, 509 Cardenas SE. and ongoing at Ricochet Gallery (Mountain Rd at 11th St.)

Joan Fenicle is featured artist at Wild Hearts Gallery in Placitas for the month of January with a reception on January 16, 1-4 pm. The multi-media show is *All About Place*: Place is powerful. It has the ability to shape us as much as we have the ability to shape place.

Marian Berg has been selling a few paintings at the Ricochet Gallery and in the current "Big Queer Show" that is happening there in December.

Carol Adamec had another piece purchased by Bernalillo County 1% for Public Arts. "Tribal Kimono" is the third of Carol's paintings in the county's collection. Image at on next page.

Martha Heard: Julianna Kirwin did a community mural project for the "Walker Property" on 6th street NW near the Johnny Tapia Community Center at Wells Park. To her surprise, she appeared in the mural along with several women who are a part of Wells Park history--Jesse Sais, Claudette Romero, and Emma Albright.

"In a small gathering at Julianna's studio on 8th and Mountain, I had told their stories. The mural was up for a couple of weeks, and then was moved inside the Community Center. In the November 22 edition of Downtown Albuquerque News Peter Rice, editor, recounted some of the stories I told."



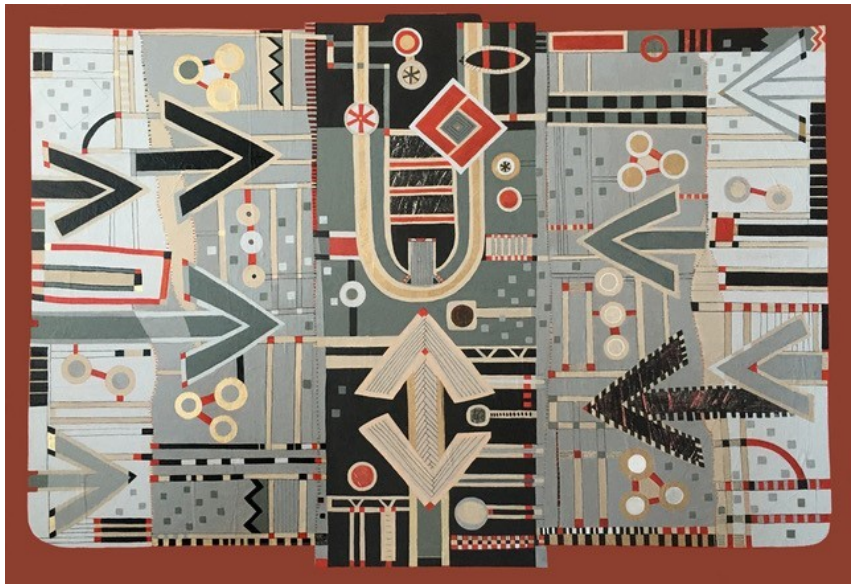
Linda Allison, Jemez (watercolor)



ARTspiration



Barbara Endicott



Carol Adamec



Janine Wilson, Waiting (watercolor)



RAINBOW ARTISTS

WWW.RAINBOWARTISTS.COM

WOMEN MAKING ART SINCE 1990

Contacts

Treasurer, historian, webmaster:

Janine Wilson

(janineabq@gmail.com)

Newsletter editor: **Joan Fenicle**

(joanf41@gmail.com)

2022 dues are \$12 though you are welcome to give more. Dues must be paid to participate in exhibitions. Make check to Rainbow Artists, and mail to Janine Wilson, 12812 Bryce Court NE, Albuquerque, NM 87112

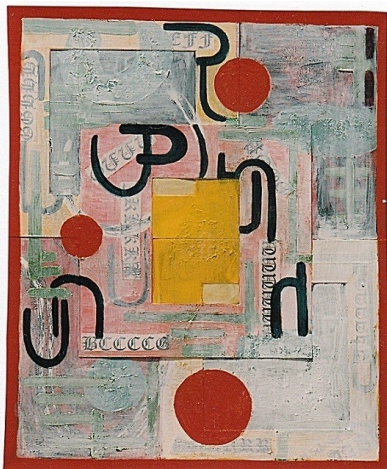
Mission Statement

Rainbow Artists, an award winning women's collective established in Albuquerque in 1990, supports, promotes, and encourages women artists.

- * We embrace ethnic and artistic diversity.
- * We strive to grow in our art and our association with each other.
- * We share our talents and enrich our creativity and our community through collaborative exhibits and projects.

Rainbow Artists
12812 Bryce Court NE
Albuquerque, NM 87112
www.rainbowArtists.com

Share our [Facebook](#) page with your friends. The more traffic we get, the more exposure your art has.



Eliza Schmid, *Abstract with Gothic Letters*
oil on canvas collage