



RAINBOW ARTISTS

a WOMEN'S COLLECTIVE IN NEW MEXICO

ESTABLISHED JANUARY 1990

WWW.RAINBOWARTISTS.COM

## June 2016 Newsletter

### Monthly Program:

### Naked Ladies' Lunches

Presented by Ginger Quinn

Monday, June 20, 2016, 6:30 pm

OFFCenter Community Arts

808 Park Avenue SW

Ginger is doing a program based on a cookbook that belonged to a friend's mother who recently died in her 90's. The book is called Naked Ladies' Lunches and is a series of line drawings of a group of women who met regularly to draw each other naked and share delicious lunches. We're going to draw each other (not naked) and then bring a recipe to go with our drawing. This could be the makings of a new show.

---

## Benefits of belonging to a women's art collective

Suzanne Visor reported on the sales made at the two most recent shows at the Unitarian Church (Silk Painters and Rainbow). These figures include both wall art and Mercado sales.

### SilkPainters Exhibit

Total Sold: \$4046.00

Paid to Artists: \$2832.00

### Rainbow Artists Exhibit

Total Sold: \$1,335.00

Paid to Artists: \$934.50

## ARTdates

**Words and Images: Tortuga Gallery**, 901 Edith Blvd. SE in Albuquerque. Exhibit dates Saturday, June 11 to Saturday, July 9. **Corrected delivery date TUESDAY, June 7, 9am-5pm** Opening reception Saturday, June 11, 6-9pm. Closing reception Saturday, July 9, 6-9pm. Pick up artwork Monday, July 11, 10am-5pm. Prospectus online at [rainbowartists.com](http://rainbowartists.com). Contact: Carol Adamec, 463-3122.

**Rainbow Artists at St. Marks:** "Through the Eyes of a Child" has been set for October. We will receive the children's art in June. Grace Collins is the exhibition coordinator—504-6726.

---

## ARTportunities

### New Mexico Art League

#### On the Horizon: Landscapes of New Mexico

An exhibit of drawings, paintings, mixed media, prints and photographs

Exhibition Dates: September 6 - October 8, 2016

Entry deadline: July 23, 2016

\$30 for up to three digital entries

Eligibility: Artists living and working in NM.

Membership to the NM Art League is not required

Questions: Email Buffy Nelson

[bnelson.newmexicoartleague@gmail.com](mailto:bnelson.newmexicoartleague@gmail.com)

### Mindful Meditation and Writing Retreats:

Mitra Bishop Roshi and Caroline LeBlanc will be offering these day long retreats beginning June 25, 2016 through January, 2017.

Contact Caroline for details:



RAINBOW ARTISTS

a WOMEN'S COLLECTIVE IN NEW MEXICO

ESTABLISHED JANUARY 1990

WWW.RAINBOWARTISTS.COM

## Rainbow May Meeting Notes

Account Balance \$1,286.

Eliza Schmid has moved; new address is 1200 Stanford Dr. NE.

Martha Heard leaves for Spain the end of May and returns the end of August.

Janine Wilson received Signature Status in the Watercolor Society.

We were reminded to bring finger food or beverage June 11 (opening) and July 9 (artist talk) for Tortuga exhibit.

St. Marks Episcopal Church exhibit, Through the Eyes of Babes, will be in October. We will get two pieces of children's work to inspire us at the June meeting. The children's pieces will also hang with the Rainbow's pieces.

Caroline LeBlanc gave a talk on author Louise Penny.

Membership Renewal: A reminder that your dues must be paid to enter Rainbow exhibitions. Mail your \$25 check payable to Rainbow Artists to:

Winona Fetherolf  
13500 Skyline Road NE, Apt G3  
Albuquerque, NM 87123

---

## Contacts

Treasurer: Winona Fetherolf (winonaf@hotmail.com)

Newsletter editor: Joan Fenicle(joanf41@gmail.com)

Historian: Janine Wilson (janineabq@gmail.com)

Publicity: Eliza Schmid (elizakschmid@gmail.com)

Facilitator for June: Ginger Quinn

Still need facilitator for July and August

## Three Weeks in Europe

“I got to see paintings and architecture that imagined in my lifetime, would only be photographs in books. The Botticelli's made me tear up. The cave paintings were fabulous, especially the Pont d' Arc reproduction of the new cave they found in 1994 in France.

The architecture of the Guggenheim Museum in Bilbao, Spain, is amazing. Inside it is very open air/space with the exhibitions off in various rooms to the side. Visiting is not tiring like traditional museums, I think, because you always come out in the center to a feeling of light and air.

And last but not least was Barcelona and Gaudi. The Sagrada Familia needs to be on every artist's bucket list. You have to accept the crowds and lines outside. But the strange thing was they seem to disappear inside. It was built to hold 15,000 people. Once you're inside you can stay as long as you want. I must have walked and sat for one and a half hours staring at the ceilings (see image), the walls, the graceful pillars and the stained glass windows (no images) that start in the east with a purple/blue circling around throughout the rainbow colors ending in the west with deep red. I was there in the late afternoon and the inside was bathed in yellows, oranges and reds. Spend your savings. Can't take it with you but the images stay till you go to the happy hunting grounds.”

Sondra Diepen



Detail of the roof in the nave. Gaudí designed the columns to mirror trees and branches



RAINBOW ARTISTS

a WOMEN'S COLLECTIVE IN NEW MEXICO

ESTABLISHED JANUARY 1990

WWW.RAINBOWARTISTS.COM

## ARTvictories

**Janice Wentworth** sold a painting at the Unitarian Church exhibition.

**Grace Collins** is going to Ft. Defiance on the Navajo Reservation, and expects to get re-charged and come back with stimulating photos.

**Marian Berg** will be one of the 12 plein air painters in the Corrales Garden Tour on Sunday, June 5 from 9 am to 4 pm. There will be an art exhibit to follow from Wednesday, June 8 to Saturday, June 11, 2016 at the Frame N Art Gallery 3563 Corrales Rd. On a sad note, her 91 year old mom passed away on May 21.

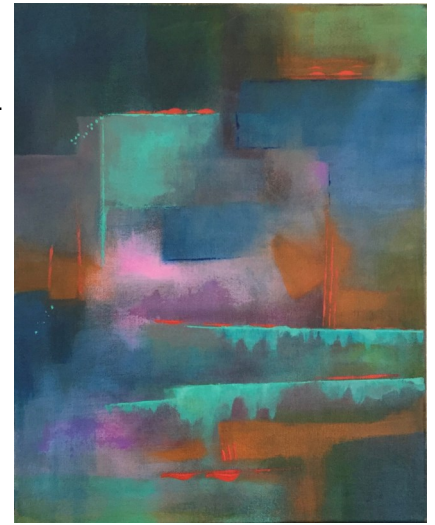
**Dee Sanchez** will also be painting the gardens of Corrales on their annual Corrales Garden Tour, Sunday, June 5, 2016. For more information, [www.corralesgarden-tour.com](http://www.corralesgarden-tour.com). Dee is painting in the juried Santa Fe Plein Air Festival June 4-9. She is also working on her 150 Challenge Show and is on painting #115. She is celebrating the end of her show with an Art Party at her home complete with Mexican food, music, and a Studio Sale. The party is free, but limited to the first 60 registered guests. Call Dee 505-792-1030. To see the completed paintings, [www.150facesandplaces.com](http://www.150facesandplaces.com)

**Eliza Schmid** will be showing two paintings ("Primary Colors") at the Off Center Gallery with the reception on Friday, June 3. She will also submit several paintings for the show "Words and Images" to the Rainbow show at the Tortuga Gallery with the reception on Sat. June 11. She will take four paintings to the St. Mark's Episcopal Church which will hang there until the end of September. During the month of July, Eliza will have a solo show at the Ferguson Library on Palo Verde Rd.

**Barbara Endicott** draws three color crayon portraits every other Sat. morning at the Downtown Growers Market in Robinson's park at 8th and Central. The next Sat. she will be drawing is June 11. The portraits take 30 mins. to complete and cost \$20. Her booth is located near the music.

**Janine Wilson** received Signature Status in the Watercolor Society.

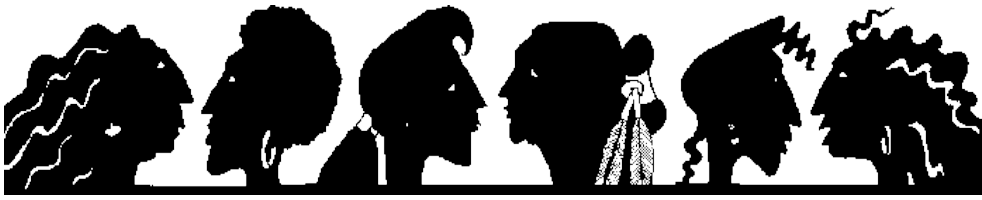
**Sue Pine** sold a painting titled "Sea Wall" at the Unitarian Church exhibit. Image at right.



## Promote your ART—it's FREE

Is your Personal ART Page in the "MEET OUR MEMBERS" section of the website?

Take advantage of this great opportunity, by being a Rainbow member, for exposure and promotion on the Rainbow Artist website in the "Meet Our Members" section. Send your bio and/or artist statement and a few photos of your art to Joan Fenicle at [joanf41@gmail.com](mailto:joanf41@gmail.com) and she will "build" your personal art page. She welcomes periodic changes to your page.



RAINBOW ARTISTS

a WOMEN'S COLLECTIVE IN NEW MEXICO

ESTABLISHED JANUARY 1990

WWW.RAINBOWARTISTS.COM

### Elevate The Cachet of Your Exhibition

Every contact you have with someone is an opportunity to wow them with your art and your professionalism, so you don't want to miss the chance to wow from the beginning.

Robert Mapplethorpe knew this. For his first solo exhibition in 1973 at New York's Light Gallery - a show of Polaroids - Mapplethorpe's invitation was a hand-printed image from a Polaroid original. He embossed his name on the outer edge, included the protective Polaroid cover, and inserted everything into hand-addressed, cream-colored Tiffany envelopes.

His invitation was a work of art in itself because, he believed, an exhibition doesn't begin when you go to the opening, but when you receive the invitation.

### Mission Statement

Rainbow Artists, an award winning women's collective established in Albuquerque in 1990, supports, promotes, and encourages women artists.

- \* We embrace ethnic and artistic diversity.
- \* We strive to grow in our art and our association with each other.
- \* We share our talents and enrich our creativity and our community through collaborative exhibits and projects.

**Rainbow Artists**  
13500 Skyline Road NE, Apt G3  
Albuquerque, NM 87123  
[www.rainbowArtists.com](http://www.rainbowArtists.com)



“Flower Truck”  
One of Dee Sanchez/ paintings in her  
150 Challenge Show.